



INTEGRATE AND EXTEND

Laserfiche integrates with SAP, one of the leading Enterprise Resource Planning applications around the world.

AUTOMATE AND LINK

Laserfiche workflow with LFIntegrator for SAP allows approval and matching processes to occur automatically.

SECURE ACCESS YOUR WAY!

Access your Laserfiche documents, forms and records without leaving SAP.

WORKS WITH SAP

HOSTED ON THE CLOUD

OR ON-PREMISE!

LFIntegrator for SAP™ is a robust and highly-scalable bilateral integration for Laserfiche® and SAP. The rich feature set of Laserfiche document management, workflow and business processes can now be married seamlessly with the enterprise management capabilities of SAP. LFIntegrator extends the limited document vault features of native SAP installations, to a full suite of approval, automation and records retention capabilities.

LFIntegrator for SAP has been developed to work with SAP's HANA architecture and thin client user experience. Experienced SAP users will find each of the features to merge directly into their customary user interface.

DOCUMENT INTEGRATION

Laserfiche Search and Scan options are added right to the menu and floating toolbars, making each of these powerful Laserfiche functions available at a click of the mouse.

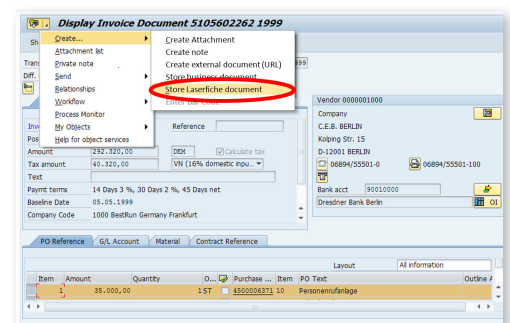
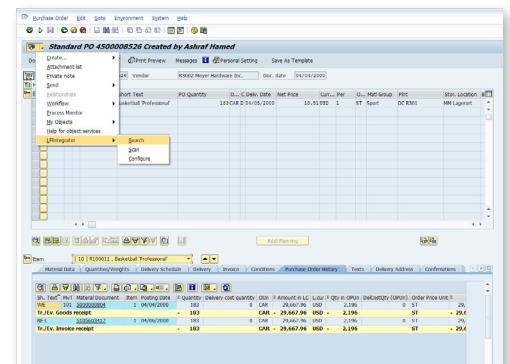
SEARCH – Invoke a search of all documents in the Laserfiche repository based on the context of the user screen, whether it is an accounting, HR, contract or other item. Search results will appear in Laserfiche Web Access, with the full suite of Laserfiche security and administrative controls retained.

SCAN – Prepopulate Laserfiche template fields with metadata already existing in SAP while launching the Laserfiche scan client, and add documents to the attachments list automatically when the scanned document is saved.

SAP ATTACHMENT SUPPORT

Natively, SAP users can store documents associated with a transaction as either attachments or URLs, and may then view them with a single click. LFIntegrator for SAP extends these options seamlessly to include documents stored in Laserfiche. Attachment links are automatically created when LFIntegrator for SAP workflows are invoked. Alternately, users can create their own Laserfiche document attachments from within the SAP client.

In either case, the Laserfiche documents are appended to the standard SAP attachment list with all other documents, meaning they can be opened from the combined roster of associated documents.

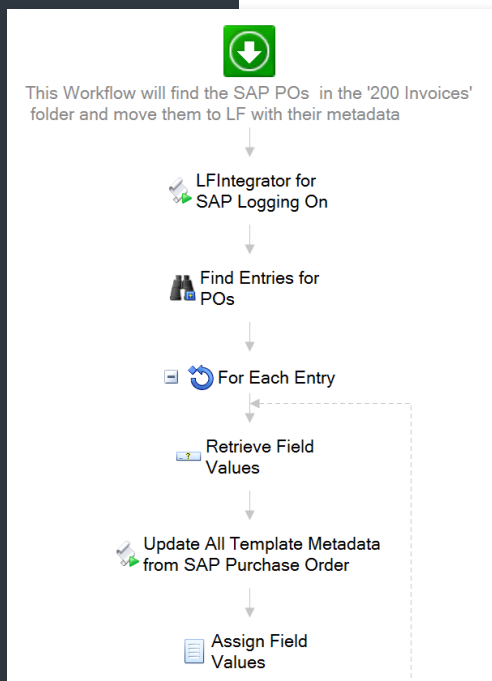


Laserfiche Search repository

Laserfiche > LFIIntegrator for SAP Demo > 01 Accounts Payable > 03 Approved for SAP Import 7 entries

Name	Pages	Indexed	Created
01 SAP Import Success		Yes	11/28/20
02 SAP Import Error		Yes	11/28/20
IN4500008526	1	Yes	1/5/20
IN4500018500	1	Yes	1/5/20
PO4500006371	1	Yes	1/5/20
PO4500008526	1	Yes	1/5/20
SH4500006371	1	Yes	1/5/20

- Laserfiche
 - LFIIntegrator for SAP Demo
 - 01 Accounts Payable
 - 01 Incoming
 - 02 Need Approval
 - 03 Approved for SAP Import
 - 100 Purchase Orders
 - 200 Invoices
 - 300 Shipping Receipts
 - 400 Other Documents
 - 02 Legal
 - 03 Customers
 - 04 Vendors
 - 05 Human Resources
 - 06 Customer Support
 - 100 Staff Folders



Print Preview of LP01 Page 00001 of 00001

Meyer Hardware Inc.
PO Box 26268
HOT SPRINGS AR 56272

Your vendor number with us
R3002

Please deliver to:
DC R3001
1424 16th Avenue SW
Denver CO 80201

Terms of delivery: FR
Terms of payment: Payable immediately Due net
Currency USD

Item	Material	Unit	Description	Price per unit	Net value
00010	R100011	183 Carton	Basketball 'Professional'		
		2,196 piece(s)		13.51	29,667.96
					0.00
		0 Carton	Still to be delivered		
			Int. Article No. (EAN/UPC) 2050000001178		
			*** Item completely delivered ***		
			Total net value excl. tax USD		29,667.96
			EURO		0.00

Purchase order
PO number/date
4500008526 / 04/04/2000
Contact person/telephone
Retail Standard US

LASERFICHE WORKFLOW AND BUSINESS PROCESS SUPPORT

While users avail themselves of the client interface additions, administrators and designers can take advantage of new LFIIntegrator for SAP Laserfiche workflow components.

Since each business process is unique, LFIIntegrator for SAP includes reusable Laserfiche workflow components that can be inserted into any Laserfiche workflow to perform particular functions at the appropriate time.

For example, the AP processing component includes connections, lookups and field updates for more than 50 separate purchase order, vendor, item and status fields associated with SAP's three-way matching for AP. This component can be added to any Laserfiche workflow to invoke on triggers, timer or by rule.

These workflow components attach to a suite of LFIIntegrator web services for ease of use, upgrade and expansion. The workflow component library will be expanded with each supported SAP module, extending the opportunity for even greater business process efficiency.

MODULE SUPPORT

The base LFIIntegrator for SAP includes security, configuration, Search, Scan and attachment support for up to 100 SAP users. Additional user licenses may be purchased.

Additional SAP module support will be released and licensed separately. These will include accounts payable, delivery and contracts in the first series of releases. Modules will include UI-Specific functions, additional configuration options, workflow components, web services, example templates and documentation.

Users with specific requests for additional modules or customizations should contact the Gordon Flesch Company.



Cambridge Connections
A division of GFC Consulting Group

4100 Horizons Drive, Suite 201
Columbus, OH 43220
614.457.5870 ph
614.457.5938 fax
www.cambridgeconnections.com